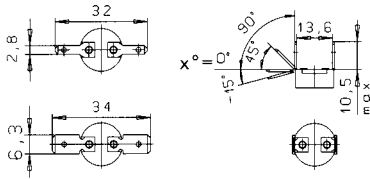


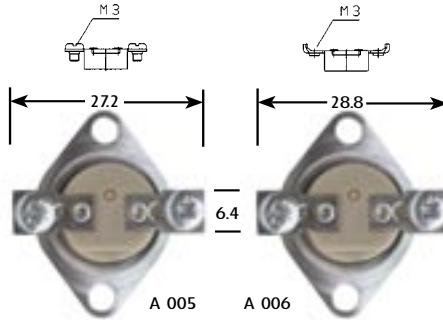
# ELECTRICAL CONNECTION

## Flat-cable plug DIN 46244

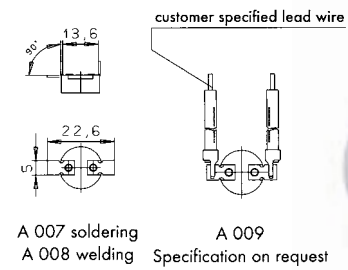


- A 001 2,8x0,5-x°
- A 002 2,8x0,8-x°
- A 010 4,8x0,5-x°
- A 003 4,8x0,8-x°
- A 004 6,3x0,8-x°

## Screw Connection



## Welding and soldering terminal

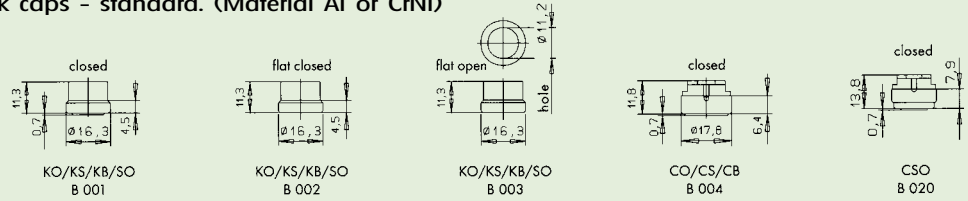


- A 007 soldering
- A 008 welding
- A 009 Specification on request



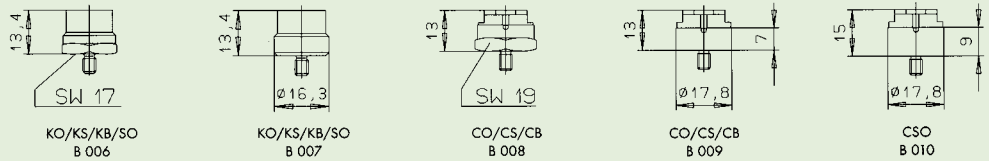
# LOCK CAPS AND FASTENING CONNECTION

## Lock caps - standard. (Material Al or CrNi)



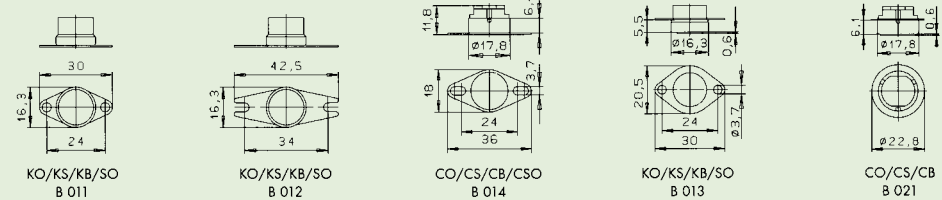
- KO/KS/KB/SO B 001
- KO/KS/KB/SO B 002
- KO/KS/KB/SO B 003
- CO/CS/CB B 004
- CSO B 020

## Lock caps with screw fitting. (Materials: Brass, standard threads m 4 x 6, other sizes available)



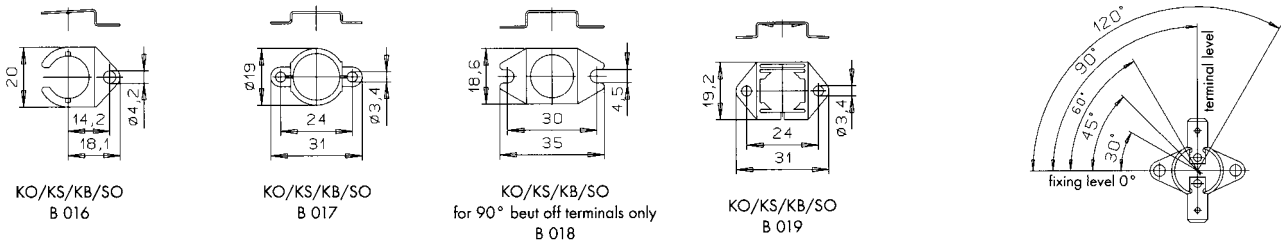
- KO/KS/KB/SO B 006
- KO/KS/KB/SO B 007
- CO/CS/CB B 008
- CO/CS/CB B 009
- CSO B 010

## Lock caps with fastening flange. Cap with fixed flange. (Material CrNi)



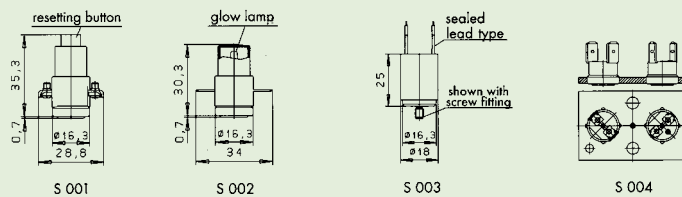
- KO/KS/KB/SO B 011
- KO/KS/KB/SO B 012
- CO/CS/CB/CSO B 014
- KO/KS/KB/SO B 013
- CO/CS/CB B 021

# FLANGES



- KO/KS/KB/SO B 016
- KO/KS/KB/SO B 017
- KO/KS/KB/SO for 90° beut off terminals only B 018
- KO/KS/KB/SO B 019

# SPECIAL DESIGNS



- S 001
- S 002
- S 003
- S 004



We come through when the heat is on™



Portage Electric Products, Inc.

Copyright 2005, Portage Electric Products, Incorporated, all right reserved

7700 Freedom Ave. NW, P.O. Box 2170, North Canton, Ohio 44720, U.S.A.

Phone: (330) 499-2727 • 1-888-G04-PEPI • FAX (330) 499-1853 • e-mail: salesinfo@pepiusa.com • www.pepiusa.com